

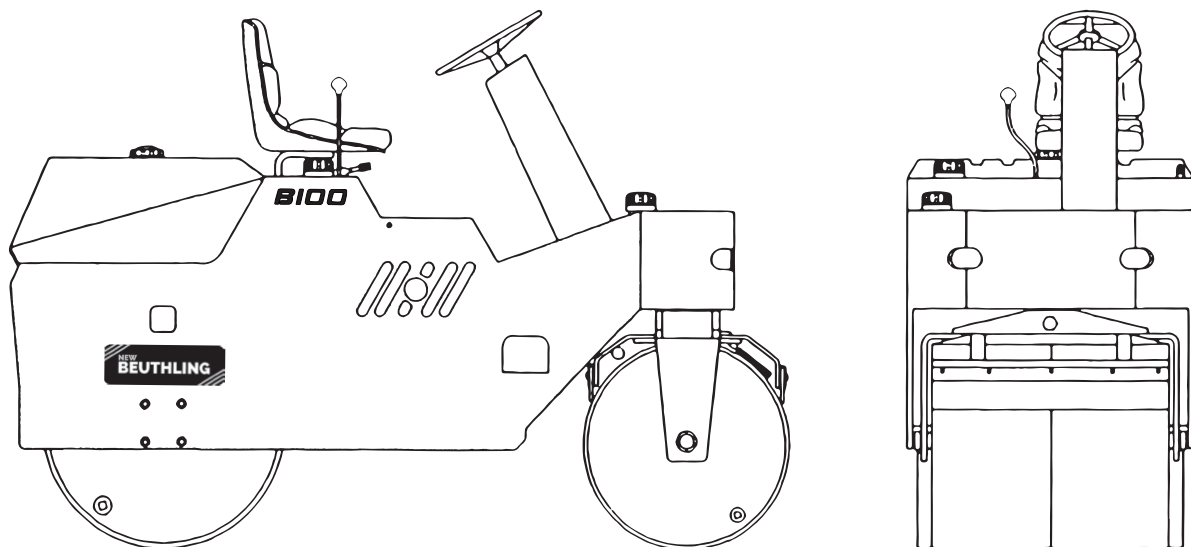


OWNER'S & PARTS MANUAL

B100

**RIDE-ON STATIC COMPACTOR - 1 1/2 TON
GASOLINE & DIESEL ENGINES**

SERIAL NUMBER 100-NB23-0000



**WARNING! READ THIS MANUAL AND  AEM ROLLER COMPACTOR
SAFETY MANUAL BEFORE OPERATING OR SERVICING YOUR MODEL B100.**

TABLE OF CONTENTS

OWNERS MANUAL

OPERATION	4-6
MAINTENANCE	6-7
LUBRICATION CHART	8
DIESEL ENGINE OPERATION	9-10
DECALS, OPERATION & MAINTENANCE	11-12

PARTS MANUAL

FRONT END ASSEMBLY	13-14
REAR DRUM ASSEMBLY	15
COVERS, RUBBER SCRAPERS & COCOA MATS	16
HYDRAULIC SYSTEM	17-18
ELECTRICAL SCHEMATIC - KUBOTA Z-602 DIESEL	19-20
ELECTRICAL SCHEMATIC - HONDA GX630	21-22
MISCELLANEOUS COMPONENTS	23-25
DRUM SPRAY SYSTEM - B100 DIESEL	26
KUBOTA Z-602 DIESEL ENGINE & RELATED COMPONENTS	27-28
WATER SPRAY SYSTEM	29
WARRANTY	30
MACHINE IDENTIFICATION INFORMATION	31

NOTE:

FOR ALL INQUIRES PLEASE INDICATE:

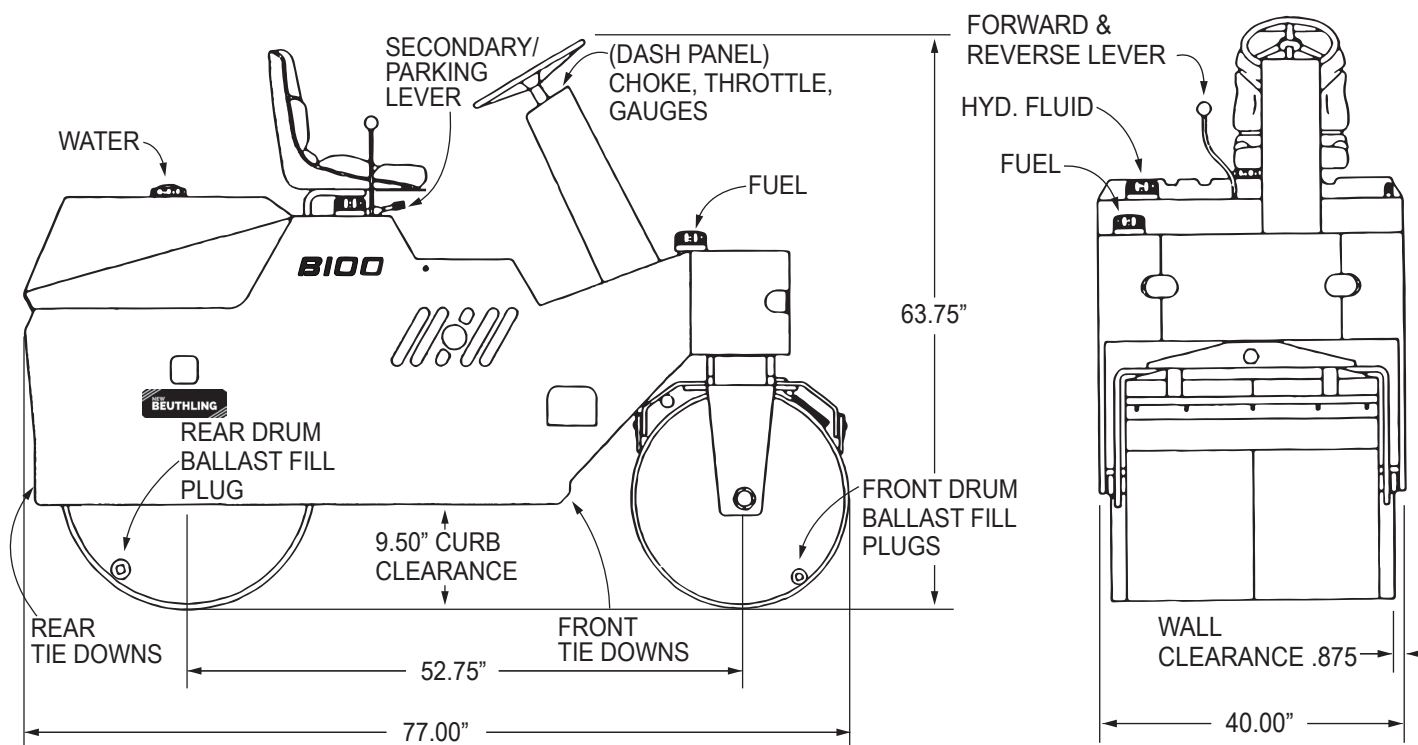
BEUTHLING MODEL _____

BEUTHLING SERIAL NUMBER _____

ENGINE MAKE & MODEL _____

ENGINE SPEC NUMBER _____

MODEL & SERIAL NUMBER PLATE IS LOCATED ON FRONT MAIN FRAME



SAFETY WARNING

- BEFORE OPERATING UNIT, READ AND UNDERSTAND "OWNER'S MANUAL."
- IT IS THE CUSTOMER'S RESPONSIBILITY TO SUPERVISE, TRAIN AND EDUCATE THEIR EMPLOYEES OR ANY OTHER USER OF THIS EQUIPMENT FOR PROPER OPERATION, MAINTENANCE AND SAFETY.
- KEEP HANDS AND FEET CLEAR WHEN UNIT IS RUNNING OR MOVING.



OPERATING OR PARKING THIS UNIT ON INCLINES, HILLS, RAMPS OR NEAR THE EDGE OF A WORK SURFACE MAY BE DANGEROUS AND CAUSE THIS UNIT TO BECOME UNSTABLE OR ROLLOVER.



ALWAYS BE IN CONTROL OF YOUR UNIT

FAILURE TO OBEY SAFETY WARNINGS MAY RESULT IN SERIOUS INJURY TO OPERATOR OR OTHERS.

OPERATION



WARNING:

Read this manual and the **AEM** "Roller - Compactor Safety Manual", supplied with the machine, **BEFORE** starting, operating, or servicing the machine.

Before starting engine make certain control lever is in "NEUTRAL" (center) position and the secondary/parking brake is engaged. The transmission **MUST** be in the "NEUTRAL" position for the engine to be started. A neutral start switch has been included within the electrical system. The brake handle is located at the operator's left and is "ON" (or brake applied) when handle is in the up position and "OFF" when handle is in the down position.



WARNING:

The machine **MUST NOT** move, at **ANY** time, when the secondary/ parking brake lever is in the "ON" (up) position.

Do **NOT** operate the machine, if the machine will **MOVE** when the secondary/parking brake lever is "ON".

NEVER drive the machine with the secondary/parking brake lever "ON".

FOR DIESEL ENGINE OPERATION SEE PAGES 8-9

When starting, keep the secondary /parking brake in the "UP" (brake applied) position. If so equipped, and not previously done, unlock the locks securing the optional floor and dash covers. Move the covers to the stowed position. On gasoline engine powered machines, put the fuel shut off valve, if so equipped, in the "RUN" position if not previously done.

Continued next page



CAUTION:

Never over crank - if the engine does NOT start within ten (10) seconds of continuous cranking, turn the ignition key switch to the "OFF" position and wait at least thirty (30) seconds. This will allow the starter motor time to cool. Try starting the engine again. DO NOT increase the speed of the engine ABOVE the LOW rpm for a period of one (1) minute, to allow the hydraulic oil to reach operating temperature.

If so equipped with ROPS, IMMEDIATELY, after being seated, place the seat belt across the lap and SECURELY insert the metal end into the belt buckle. TIGHTEN the belt, AGAINST the body, by pulling on the loose end of the belt.

Move the engine speed throttle control to the LOW (down) engine idle speed position. Pull the engine choke knob to the "choke" (up) position, if the engine is cold.

Turn the ignition switch key to the START position. Crank and start the engine. The "green" (on) indicator light, located near the switch, will be lighted. If used, push the choke knob "in" as the engine warms. Put the engine throttle speed (RPM) control in the desired engine speed position and turn the throttle control handle clockwise to "lock" in position.



WARNING:

Do NOT put the engine throttle speed (RPM) control in the "FULL" engine speed position when the machine is being run in a confined area, or is near ANY object.

Check operation of ALL gauges and instruments. Check the operation of ALL other optional equipment, such as the pressurized water sprinkler system and working lights, if so equipped. The machine is put into motion by moving the control lever in the direction of the ravel desired. PUSHING the lever in the FORWARD direction will select a FORWARD direction of machine travel. PULLING the lever in the BACKWARD direction will select the REVERSE direction of the machine travel. If so equipped, note that the back up alarm system sounded when the control lever moved within the REVERSE position. The machine travel speed is proportional to the amount of the control lever movement, UNTIL full lever travel has been reached, in EITHER direction. The control lever should be moved slowly from one direction through neutral to the opposite direction. The procedure utilizes the hydraulic system's DYNAMIC BRAKING capability to bring the machine's weight to a complete stop, at neutral, before going in the opposite direction. This procedure allows the transmission system and engine to slow the machine to a stop.

If it is noticed that the engine power decreases when the control lever is fully advanced during a heavy pull, move the control lever back to increase power and decrease "engine lugging".



WARNING:

Slowing or stopping of machine during LEVEL surface operation is done by moving the directional/speed control lever TOWARD, and then TO the NEUTRAL position. Slow, or stop, the machine on a SLOPE, by moving the directional/speed control lever to the direction OPPOSITE of the direction of machine travel.

If the machine speed can NOT be controlled through the use of dynamic braking, use dynamic braking AND the secondary/parking brake system to slow, and then stop the machine.

The secondary/parking brake system MUST be used to hold the machine in a "stopped" condition at ALL times. The transmission system will NOT hold the machine in a "stopped" condition.

STOPPING ENGINE

Before stopping the engine, place the directional/speed control lever in NEUTRAL. Put the secondary/parking brake lever in the "UP" position to apply brake. Put the engine throttle control in the LOW engine idle speed (RPM) position. Run the engine for a period of at LEAST one (1) minute, at the LOW idle speed, BEFORE the engine is stopped.

WATER SPRINKLER SYSTEM

The standard gravity, or optional pressurized water sprinkler system will help keep both drums clean when compacting asphalt. Fill the water tank with clean water. Located by the seat are dual water valves. Open these valves, by moving the valve handles, until the desired flow rate is obtained at each drum. If the machine is equipped with the optional pressurized sprinkler system, also, put the water sprinkler system control switch in the "ON" position (located on dash). NEVER run the system dry.

A full width cocoa mat is located on each drum and is used in combination with the water sprinkler system to help keep the drum surface clean.

DRUM SCRAPERS

Both the front and rear drums are equipped with full width, adjustable rubber scrapers which are mounted ahead of, and behind each drum. These scrapers are designed to help keep large pieces of material from clinging to the drums when traveling in either direction. The scrapers must remain adjusted against the surface of the drums at all times.

DRUM BALLAST

This machine is designed for use with or without liquid ballast in the front and rear drums.

If water ballast is used in temperatures below freezing, use 30% alcohol in water. If fuel oil is used, allow 10% for expansion. A pipe plug is located in each roller for filling and draining purposes, be sure to fill both front drums. Access to plug in rear roller is through a large clearance hole in right side plate. Rotate rear roller to remove plug.

TOWING BY-PASS VALVE

The towing by-pass valve is located on the top of the hydraulic transmission in the engine compartment. Normal operation close valve CW (clockwise), to freewheel-open valve 180 degrees CCW (counterclockwise). See by-pass valve decal next to valve for operating instructions. Do NOT tow the machine unless it is TOT ALL Y disabled and MUST be moved from the job site for repair. If the machine must be removed from the work surface, tow it at a SLOW SPEED and on a LEVEL surface ONLY. Tow it only for a distance less than 100 feet, without the engine "running". If the machine must be towed a longer distance than above, also disconnect the rear drum drive chain and remove it from the machine. NEVER tow this machine on a road or highway.



CAUTION:

BEFORE and AFTER towing APPLY the secondary/parking brake. Return the towing by-pass valve to the "normal operation" (closed) position. Always block drums when machine is stationary with a by-pass valve in FREEWHEEL (OPEN) position.

MACHINE TRANSPORT

When the machine is being moved by truck or trailer, use SOLID wood blocking. Use SOLID wood blocks in front, and at the rear, on EACH side of EACH drum. Six (6) tie-down areas are provided and are to be used, with the blocking, to secure the machine to the truck or trailer bed when transporting the machine. Secure all fill caps and covers before transporting.

MAINTENANCE



WARNING:

DO NOT operate machine if any part is not in proper operating condition or is missing. Always remove key from switch when performing maintenance (engine off), leaving equipment unattended or when equipment is not in use.

ENGINE

Daily check the engine lubrication oil level in the crankcase. The engine lubrication oil MUST be kept at a level ABOVE the "ADD" mark but NOT ABOVE the "FULL" mark on the engine lubrication oil dipstick. Check the engine inlet air cleaner condition and remove and replace as needed.



CAUTION:

See the "Engine Operation and Maintenance Instruction Manual", published by the Honda Engine, for approved, correct engine component inspection and maintenance periods and/or procedures.

HYDRAULIC SYSTEM

After a new machine has run FIVE (5) hours, the oil filter should be changed. This is to rid the system of any trapped contamination from factory assembly. ANYTIME the filter has been changed, IDLE engine for three (3) minutes with control lever in neutral. At the end of this running period SLOWLY engage forward to reverse. This allows fluid to replace the air in the pump area introduced into the system with the filter change. IF THIS PROCEDURE IS NOT FOLLOWED partial or complete failure of the pump will result.

Check hydraulic fluid daily, change fluid and filter every 250 hours or yearly, sooner if conditions warrant, i.e., extreme dust or condensation. This machine is equipped with a 2.6 gallon oil reservoir - when changing or adding fluid, use AWISO 32. To prevent any foreign matter from entering the tank, extreme care should always be used when removing fill cap. Fluid is at proper level when seen at the "middle" of the screen in the fill neck.

DIRECTIONAL CONTROL LEVER

Lubricate the directional control lever and cable assembly exposed, and pivoting part areas, with EP-2 chassis grease. NO zerk fitting is found on the directional control lever and/or cable assembly. Inspect the mechanical condition of the control lever and cable assembly. It must NOT be loose, damaged, or bind within the lever, or cable. Repair, or replace, the direction control lever and/or cable assembly if any damage is noted.

SECONDARY/PARKING BRAKE

Daily inspect and adjust (if necessary) brake lever next to operator. Further adjustment can be made at the brake band clevis (2) and brake rod end clevis (1). Check and inspect brake rod. Lubricate the secondary/parking brake arm assembly found on the right side of the machine. Access to the one (1), zerk fitting is from the under side of the arm assembly.

FRONT DRUMS

Several times per year, lift the front drums and check for any side movement (end play) of the drums, through the tapered roller bearings. If needed, adjust the movement by loosening the two (2) set screws found on each end of the front axle and tightening the cap screws (having grease zerks) to obtain correct end play. Retighten the set screws.

DRIVE CHAIN/REAR DRUM

Weekly check the main drive chain for link wear, or damage. Repair, or replace, the drive chain if any wear, or damage is noted. Check the slack adjustment of the drive chain. The chain should have 1/2 inch slack. The slack is measured by laying the straight edge on top of the chain, between the sprockets. The chain "sag", measured at the center of the chain, between the sprockets should be 1/2 inch.

To tighten the main drive chain, loosen hydraulic drive motor plate bolts (3), turn the adjusting screw until the drive motor slides to desired location. Check for proper sprocket alignment before re-tightening adjusting screws. Removal of a chain link will compensate for any excess stretch which may develop in the chain.

DRUM SCRAPERS/COCOA MATS

Check the condition and adjustment of all four (4) rubber scrapers, if worn beyond adjustment replace with new. NOTE: Rubber scrapers can be removed and flipped to opposite side to extend life. Check and replace both cocoa mats when worn or damaged. Never allow steel cocoa mat pan to come in contact with drum surface.

BEARINGS

Lubricate each of the four (4) front axle bearings through the one (1) zerk fitting found at the left, and the right end of the front axle shaft with EP-2 chassis grease. Use enough grease through zerk fitting to purge old grease on inner bearings.

All bolts, drive coupling set screws and collar set screws of bearings, should be checked during each periodical maintenance check and lubrication activity.

See lubrication chart in this manual and under center floor cover for complete bearing lubrication.

ELECTRICAL SYSTEM

This system is 12-volt, during engine and other system maintenance inspections, check the electrical wiring for correct routing and support. Inspect the wires for loose terminal connections, cracks or wear in the wiring insulation and for corrosion.



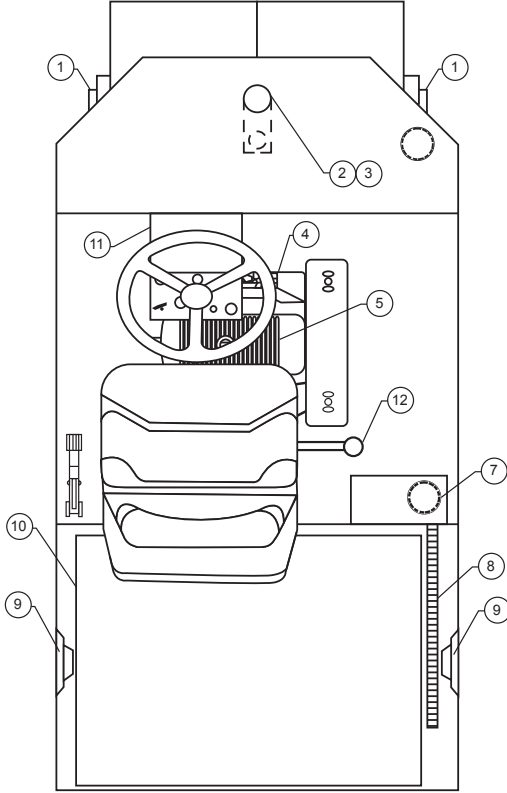
WARNING:

BATTERY EXPLOSION CAN OCCUR IF A BATTERY IS SHORTED. ALWAYS disconnect BOTH the positive (+) AND the negative (-) battery cables from a battery, BEFORE ANY repair procedures are done to the electrical wiring or components. DO NOT weld on machine unless battery is disconnected.

A thirty (30) amp circuit breaker has been installed in the electrical circuit. It is located on the lower steering column, in the engine compartment. If a circuit overload occurs, the circuit breaker will reset automatically every ten (10) seconds, or until the cause of the overload has been located and corrected.

The machine is equipped with an hourmeter. NEVER attempt to disconnect the hourmeter. Engine and machine operating hours are essential for proper machine maintenance.

LUBRICATION CHART



MODEL 100

Ref No.	Lubrication Point					Types of Lubricant	Lub. Fitting
		DAILY	WEEKLY	MONTHLY	250 HOURS		
1	Front Axel Bearings		•			EP-2 Chassis Lub.	Yes
2	Front Pivot Tube		•			EP-2 Chassis Lub.	Yes
3	Oscillating King Pin		•			EP-2 Chassis Lub.	Yes
4	Engine Crankcase	✓				See Engine Manual	No
5	Engine Air Cleaner	✓				See Engine Manual	No
6	Hydraulic Oil Filter				•	Replace	No
7	Hydraulic Oil Reservoir	✓			•	AWISO 32	No
8	Main Drive Chain		✓	•		Light Grade Oil	No
9	Rear Drum Flange Bearings		✓	•		EP-2 Chassis Lub.	Yes
10	Parking Brake Arm Assembly	✓	•			EP-2 Chassis Lub.	Yes
11	Steering Gear Box				✓	EP-2 Chassis Lub.	No
12	Control Lever	✓	•			EP-2 Chassis Lub.	No

✓ Check • Lub. or Change
 See Owner's Manual For Further Details

FILTER CHART

Honda GX 630
Gasoline Engine

Oil Filter	200-0400
Fuel Filter	200-0402
Air Filter Element	200-0401
Hyd. Oil Filter	130-0002

FILTER CHART

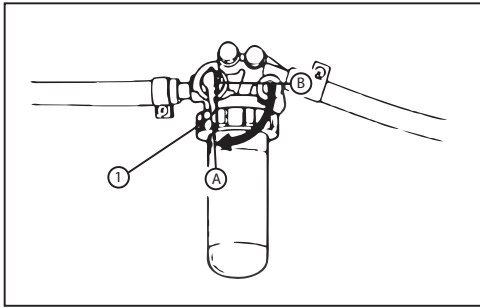
Kubota Z602
Diesel Engine

Oil Filter	205-0010
Fuel Filter	205-0011
Air Filter Element	205-0246
Hyd. Oil Filter	130-0002

STARTING DIESEL ENGINE

IMPORTANT:

- Do not use ether or any starting fluid for starting the engine, or a severe damage will occur.
- When starting the engine after a long storage (of more than 3 months), first set the stop lever to the "STOP" position and then activate the starter for about 10 seconds to allow oil to reach every engine part.

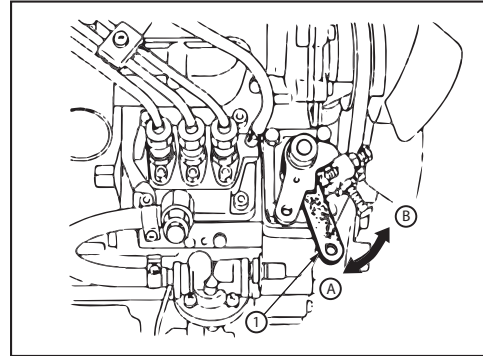


(1) Fuel Cock

(A) "ON"
(B) "OFF"

- Set the fuel cock to "ON".
- Place the engine stop lever in "START" position.

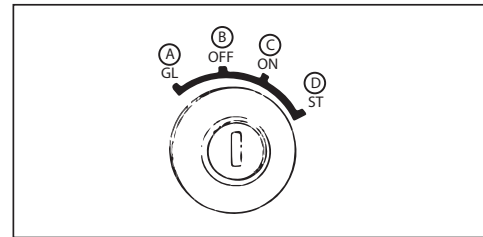
- Place the speed control lever at more than half



(1) Speed Control Lever

(A) "OPERATION"
(B) "IDLING"

"OPERATION".



(A) "PREHEATING"
(B) "SWITCHED OFF"
(C) "OPERATION"
(D) "START"

- Insert the key into the key switch and turn it "ON".
- Turn the starter switch to the "PREHEATING" position to allow the glow lamp timer indicator to illuminate.

COLD WEATHER STARTING DIESEL

If the ambient temperature is below -5°C (23°F) and the engine is very cold, start it in the following manner:

Take steps (1) through (4) left.

Turn the key to the "PRE-HEAT" position and keep it there for a certain period mentioned below.

IMPORTANT:

- Shown below are the standard preheating times for various temperatures. This operation, however, is not required, when the engine is warmed up.

Temperature	Preheating Time
Over 10°C (50°F)	About 6 sec.
Below -5°C (23°F)	About 10 to 15 sec.

Note:

(with lamp timer in use)

- The glow lamp goes out in about 6 seconds when the lamp timer is up. Refer to this for pre-heating. Even with the glow lamp off, the glow plug can be pre-heated by turning the starter switch to the "PREHEATING" position.

6. Turn the key to the "START" position and the engine should start. Release the key immediately when the engine starts.

7. Check to see that the oil pressure gauge and battery gauge are indicating properly, if not immediately stop the engine, and determine the cause.

(See "CHECKS DURING OPERATION" in "Operating the Engine" Section of Kubota Operators Manual.)

Note:

- If no oil pressure immediately stop the engine and check;
 - if there is enough engine oil.
 - if the engine oil has dirt in it.
 - if the wiring is faulty.
- If the engine does not catch or start at 10 seconds after the starter switch is set at "START", wait for another 30 seconds and then begin the engine starting sequence again. Do not allow the starter motor to run continuously for more than 20 seconds.

8. Warm up the engine at medium speed without load.

IMPORTANT:

- Do not allow the starter motor to run continuously for more than 20 seconds.
- Be sure to warm up the engine not only in winter, but also in warmer seasons. An insufficiently warmed-up engine can shorten its service life.
- When there is fear of temperature dropping below -15°C (5°F) detach the battery from the machine, and keep it indoors in a safe area, to be reinstalled just before next operation.

STOPPING DIESEL ENGINE

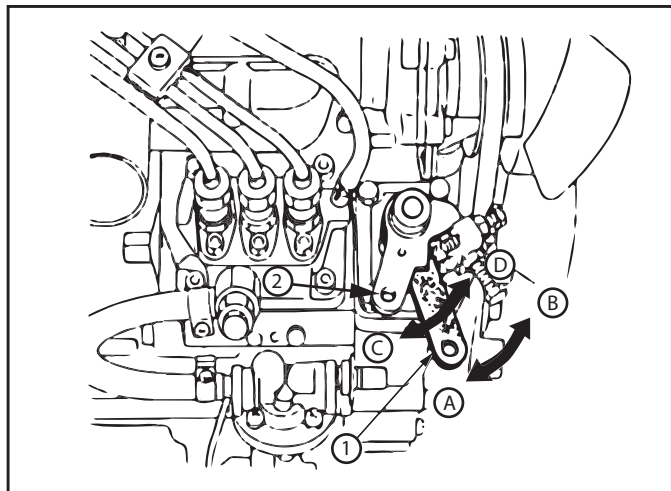
1. Move directional/speed control lever to **neutral position**.
2. Set engine **throttle handle** to **idle** position. (Down)
3. Set **parking brake switch** to ON position .
4. Turn **ignition key** counterclockwise to **off position** and remove from switch. Do not turn ignition key to off position until engine stops. Spring actuated brakes **will not** be applied with ignition switch on.

EMERGENCY SHUTDOWN PROCEDURE:

(Diesel Engine)

1. Move directional/speed control lever to **Neutral Position**.
2. Turn **Ignition Key** counterclockwise to **Off Position** and remove from switch. Parking Brake is spring actuated when engine is stopped and Ignition Switch is turned off.

See Kubota Engine Owners Manual for additional details on engine operation.



(1) "Speed Control Lever"
(2) "Engine Stop Lever"

(A) "IDLING"
(B) "OPERATION"
(D) "START"
(D) "STOP"

DECALS, OPERATION & MAINTENANCE

TIE DOWN



380-003/132

**SEE OPERATION &
MAINTENANCE MANUAL
FOR ALL ADJUSTMENTS
& SERVICE**

DIESEL FUEL ONLY

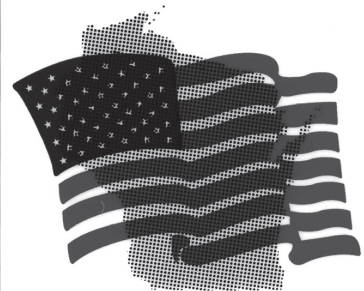
GASOLINE ONLY

HYDRAULIC OIL

RECOMMENDED HYDRAULIC FLUIDS

- USE H.D. ISO-32 HYD. FLUID OR EQUIVALENT
- FILL TO MIDDLE OF SCREEN ONLY
- CHECK HYDRAULIC FLUID DAILY
- CHANGE FLUID & FILTER EVERY 250 HRS. (SOONER IF CONDITIONS WARRANT)

**NEW
BEUTHLING**



AMERY, WISCONSIN



IMPORTANT IN HANDLING RADIATOR

1. Prior to use, check the water and replenish it. Don't Forget This.
2. When the overflow pipe starts emitting vapor, check the water and replenish it.
3. When dirt and insects are trapped in the screen, remove the screen and clean it.
4. Check and clean the Fins periodically. Fins clogged with dirt and mud will increase the consumption of water.
5. When the engine is put to continuous use under the blazing sun, inspect the water more often than usual.
6. For further details read the Operator's Manual.

16478-88232

DRUM SPRAY

CLOSED

**DRUM
SPRAY
FLOW
CONTROL**

MAX

**⚠ CAUTION
NEVER RUN
WATER PUMP
WITH VALVE
IN CLOSED
POSITION.**

380-0108

**FULL RPM-PULL UP
THROTTLE
IDLE-PUSH DOWN**

**ON-PULL UP
OFF-PUSH DOWN**

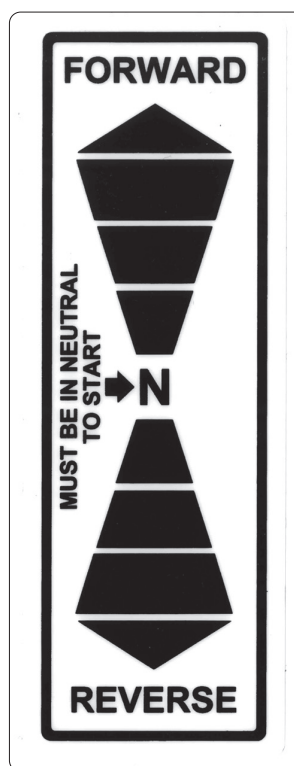
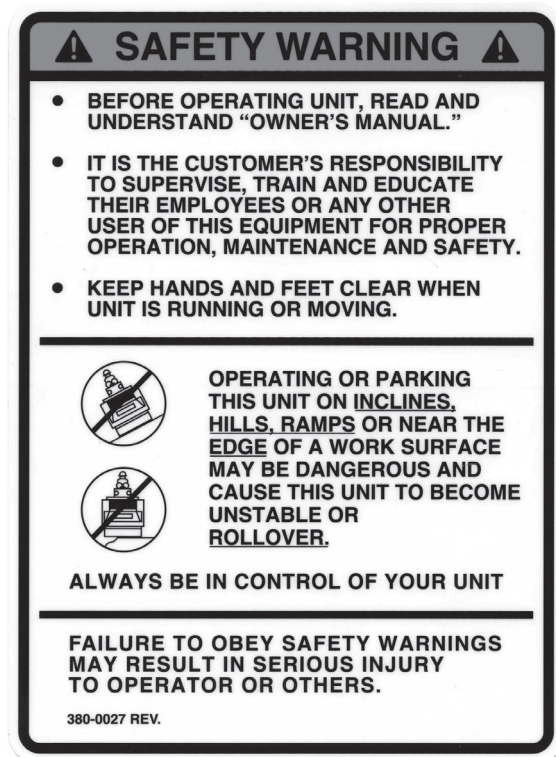
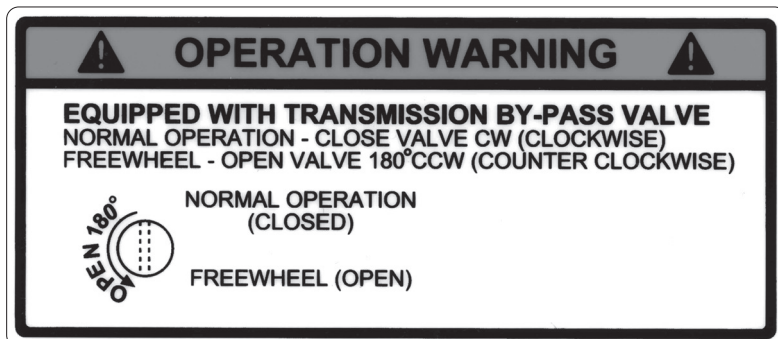
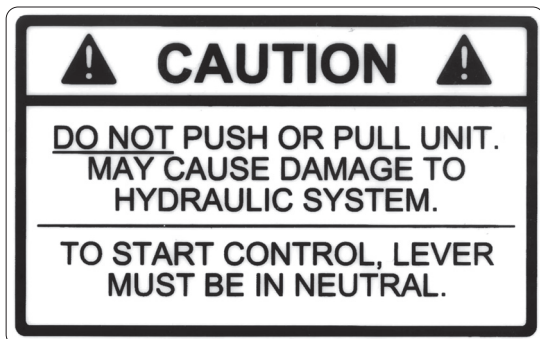
**NEW
BEUTHLING**

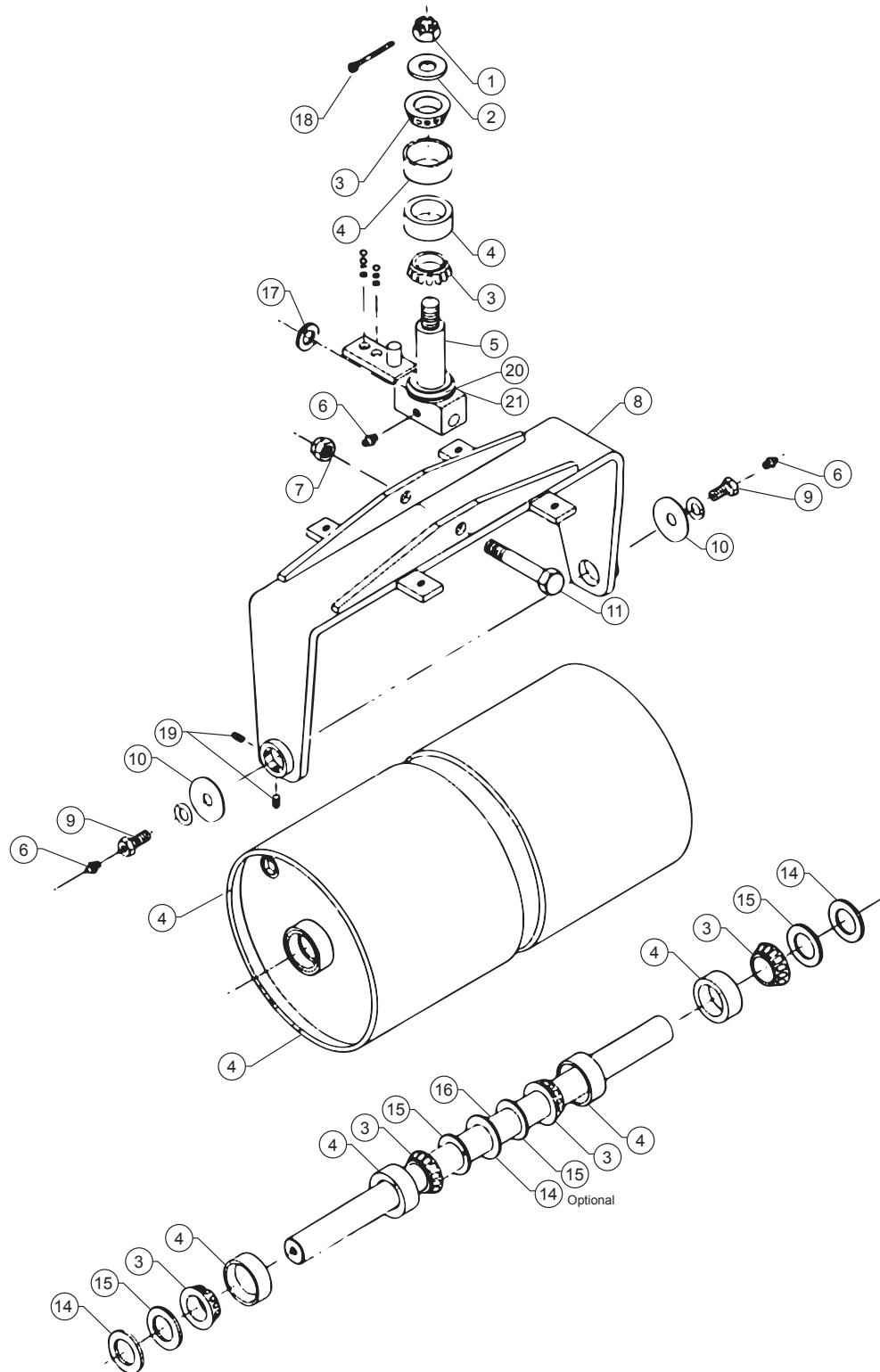
380-0011

START

START

DECALS, OPERATION & MAINTENANCE



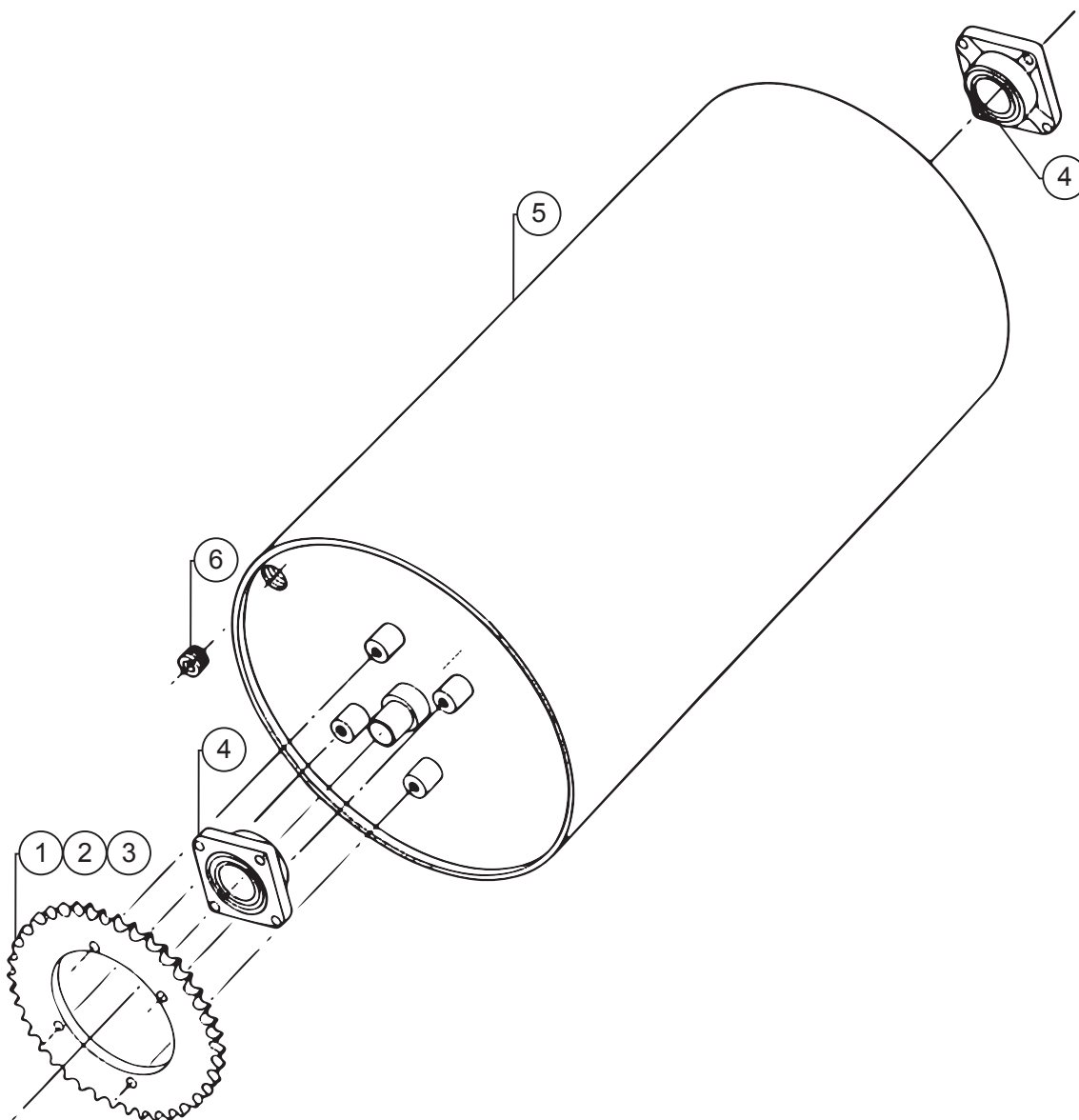


FRONT END ASSEMBLY

Item No.	Part No.	Description	Qty.
1	609-0076	Hex Slotted Nut	1
2	000-1043	Washer - King Pin	1
3	300-0001	Bearing Cone	6
4	300-0002	Bearing Cup.	6
5	000-1380	King Pin (complete with 000-2014 and 000-2015)	1
6	370-0001	Grease Fitting 1/4" - 28 NF	3
7	607-0012	Lock Nut 1" - 8 NC.	1
8	000-1325	Yoke	1
9	000-1753	Front Axle Bolt	2
10	000-1107	Washer - Front Axle	2
11	000-1222	King Pin Bolt	1
12	526-0010	1 1/2" Countersunk Ballast Fill Plug	2
13	000-1323	Front Drum Half (sold in pairs).	2
14	000-3057	Front Axle Bearing Spacer Set (1) .060 (1) .030 (1) .109	As Required
15	000-1058	Front Axle Grease Seal Inner & Outer	4
16	000-1057	Front Axle.	1
17	000-1292	King Pin Bolt Spacer	As Required
18	630-0009	Cotter Pin	1
19	615-5001	Soc. Head Set Screw	4
20	000-2014	Grease Seal – King Pin	1
21	000-2015	Washer – King Pin	1

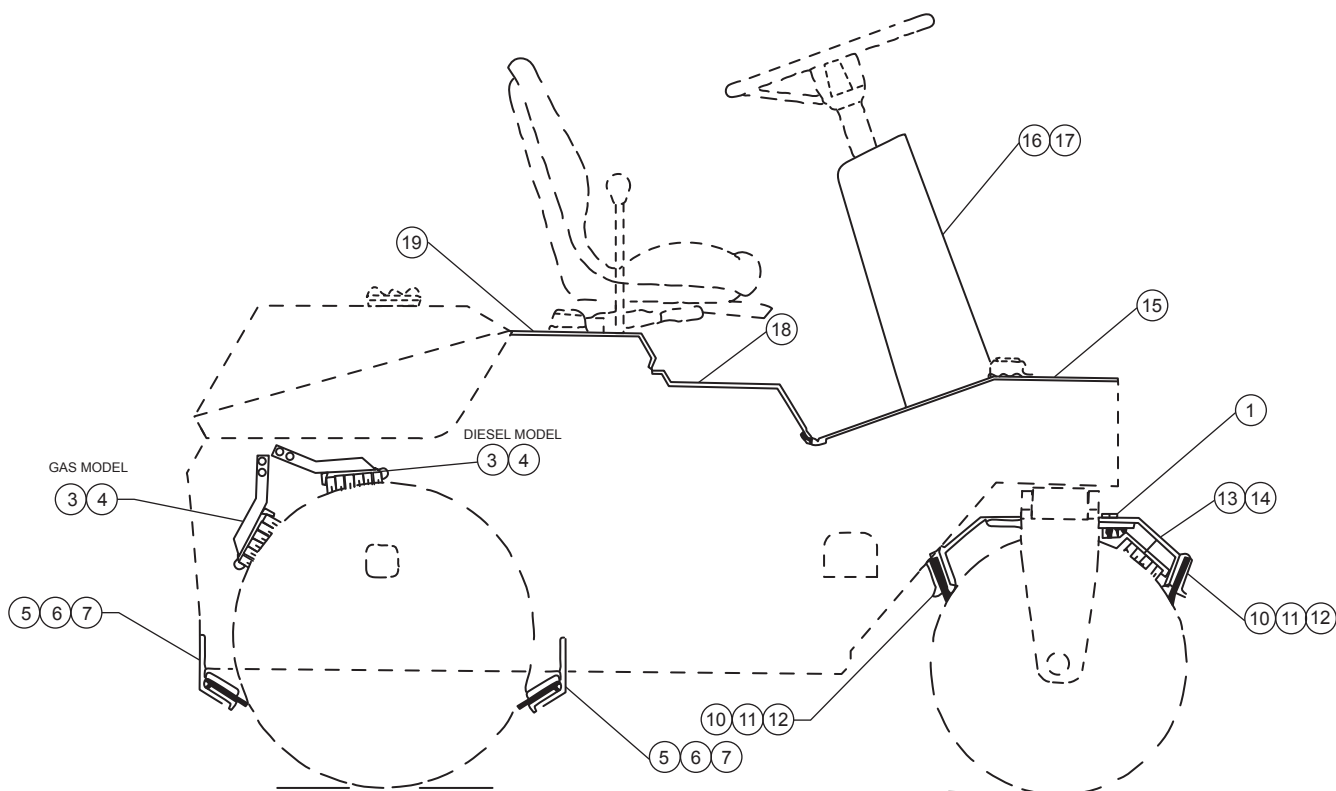
REAR DRUM ASSEMBLY

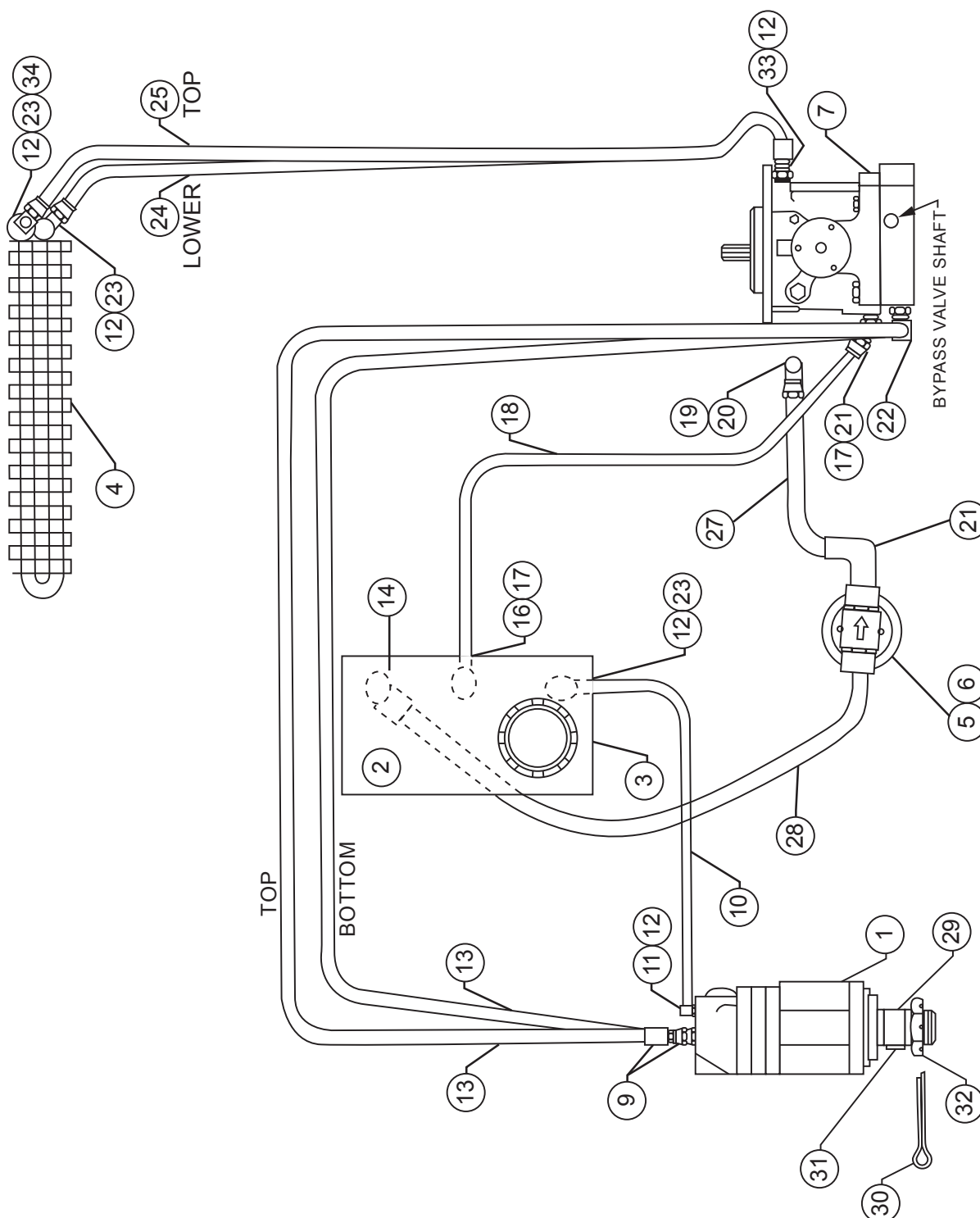
Item No.	Part No.	Description	Qty.
1	000-1478	Sprocket - Rear Drum (Power) - OPTIONAL	1
1	000-1331	Sprocket - Rear Drum (Speed)	1
2	225-0014	Drive Chain w/ Connector (Power) - OPTIONAL	1
2	225-0004	Drive Chain w/ Connector (Speed) - NOT SHOWN.	1
3	000-1347	Drive Sprocket (on Drive Motor) - NOT SHOWN.	1
4	300-0003	Bearing, Rear Drum.	2
5	000-1333	Rear Drum	1
6	526-0010	1 1/2" Counter Sunk Ballast Fill Plug	1



COVERS, RUBBER SCRAPERS & COCOA MATS

Item No.	Part No.	Description	Qty.
1	000-1416	Front Cocoa Mat Pivot Bracket (1 L/H & 1 R/H)	2
3	000-1293	Cocoa Mat Pan - Rear	1
4	355-0005	Cocoa Mat Rear	1
5	000-1296	Bracket - Rear Drum Scraper	4
6	000-1410	Back Up Bar - Rear Rubber Scraper	4
7	000-1411	Rear Rubber Scraper	2
10	000-1268	Back Up Bar - Front Rubber Scraper	4
11	000-1269	Front Rubber Scraper	2
12	000-1407	Front Scraper Arm	4
13	000-1419	Front Cocoa Mat Pan	1
14	355-0001	Cocoa Mat Front	1
15	000-1363	Front Floor Cover	1
16	000-1401	Back Up Plate - Steering Column - NOT SHOWN	1
17	000-1370	Steering Column Cover	1
18	000-1367	Center Floor Cover	1
19	000-1364	Rear Floor Cover	1
*	380-0015	Complete Set of Decals	1





⚠ OPERATION WARNING

EQUIPPED WITH TRANSMISSION BY-PASS VALVE

NORMAL OPERATION - CLOSE VALVE CW (CLOCKWISE)

FREEWHEEL - OPEN VALVE 180DEGREE CCW (COUNTER CLOCKWISE)

OPEN 180DEGREE
NORMAL OPERATION (CLOSED)
FREEWHEEL (OPEN)

BEUTHLING MFG. CO.
380/007

HYDRAULIC SYSTEM - HONDA GX 630 & KUBOTA DIESEL Z602 ENGINES

Item No.	Part No.	Description	Qty.
1	105-0010	Drive Motor	1
2	000-1362	Reservoir Hydraulic Oil - 2.6 U.S. Gal.	1
3	350-0002	Fill Gap w/Screen	1
4	125-0001	Heat Exchanger (Not Shown)	1
4	125-0003	Heat Exchanger (starting with serial #10011693 & Up)	1
5	130-0003	Filter Head	1
6	130-0002	Filter Element	1
7	100-0008	Pump	1
8	380-0021	Transmission By - Pass Valve Decal (Not Shown).	1
9	500-0016	Adapter, Straight	2
10	423-0001-10	3/8" I.D. Low Pressure Hose x 10" Lg. - GAS	1
10	423-0001-10 1/2	3/8" I.D. Low Pressure Hose x 10 1/2" Lg. - DIESEL	1
11	502-0016	Adapter, 90 Degree	1
12	500-0007	Barbed Insert 9/16" - 18 Female Swivel 37 Degree JIC x 3/8" Barb	6
13	404-0002	1/2" I.D. High Pressure Hose 3500 PSI - 7/8" - 14 Female Swivel 37 Degree JIC B.E. x 22" Lg	2
14	502-0007	Adapter, 90 Degree	1
15	502-0005	Adapter, 90 Degree	1
16	502-0003	Adapter, 90 Degree	1
17	500-0005	Barbed Insert 3/4" - 16 Female Swivel 37 Degree JIC x 1/2" Barb	2
18	424-0001 -14	1/2" ID Low Pressure Hose x 14" Lg. - DIESEL.	1
18	424-0001-16 1/2	1/2" ID Low Pressure Hose x 16 1/2" Lg. - GAS	1
19	500-0006	Barbed Insert 3/4" - 14 NPT Male x 3/4" Barb	2
20	502-0004	Adapter, 90 Degree	1
21	501-0001	Adapter, 90 Degree	2
22	502-0005	Adapter, 45 Degree	2
23	502-0013	Adapter, 90 Degree	2
24	423-0001-30	3/8" I.D. Low Pressure Hose x 30" Lg. - GAS (Bottom).	2
25	423-0001-36	3/8" I.D. Low Pressure Hose x 36" Lg. - GAS (Top)	2
26	502-0008	Adapter, 90 Degree	1
27	426-0001-16	3/4" I.D. Low Pressure Hose x 16" Lg.	1
28	426-0001-20	3/4" I.D. Low Pressure Hose x 20" Lg.	1
29	000-1347	Drive Sprocket - NOT SHOWN	1
30	630-0010	1/8" x 1 3/4" Cotter Pin	1
31	106-0004	Special Drive Motor Key	1
32	106-0001	Hex Thin Slotted Nut	1
33	500-0003	Adapter, Straight	2
34	502-0006	Adapter, 90 Degree	1
35	335-0307	Fan (Mounted on cooler) - NOT SHOWN	1

Wiring diagram for a 1966-1967 Ford Mustang with a 289 cubic inch V8 engine and a 4-speed manual transmission. The diagram shows the electrical system including the battery (15), alternator (25), fuel stop timer (31), and various switches and relays. It includes a detailed inset for the horn (29) and a note about removing wires for the Murphy fuel shut down system. The diagram is labeled with component numbers 1 through 37 and wire colors.

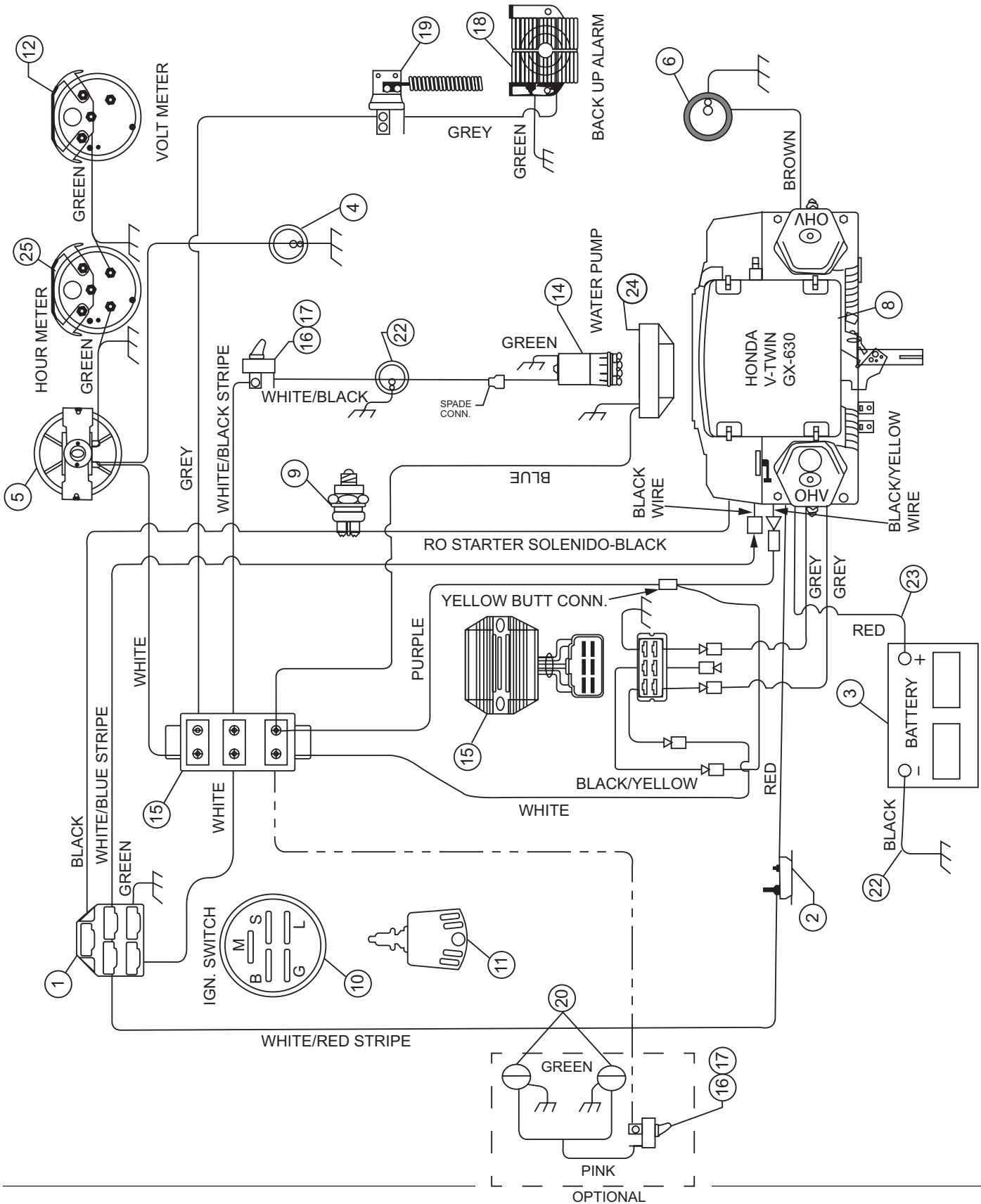
REMOVE THESE WIRES WHEN USING MURPHY FUEL SHUT DOWN SYSTEM.

DETAIL (A)

ELECTRICAL SYSTEM - W/ KUBOTA DIESEL Z602

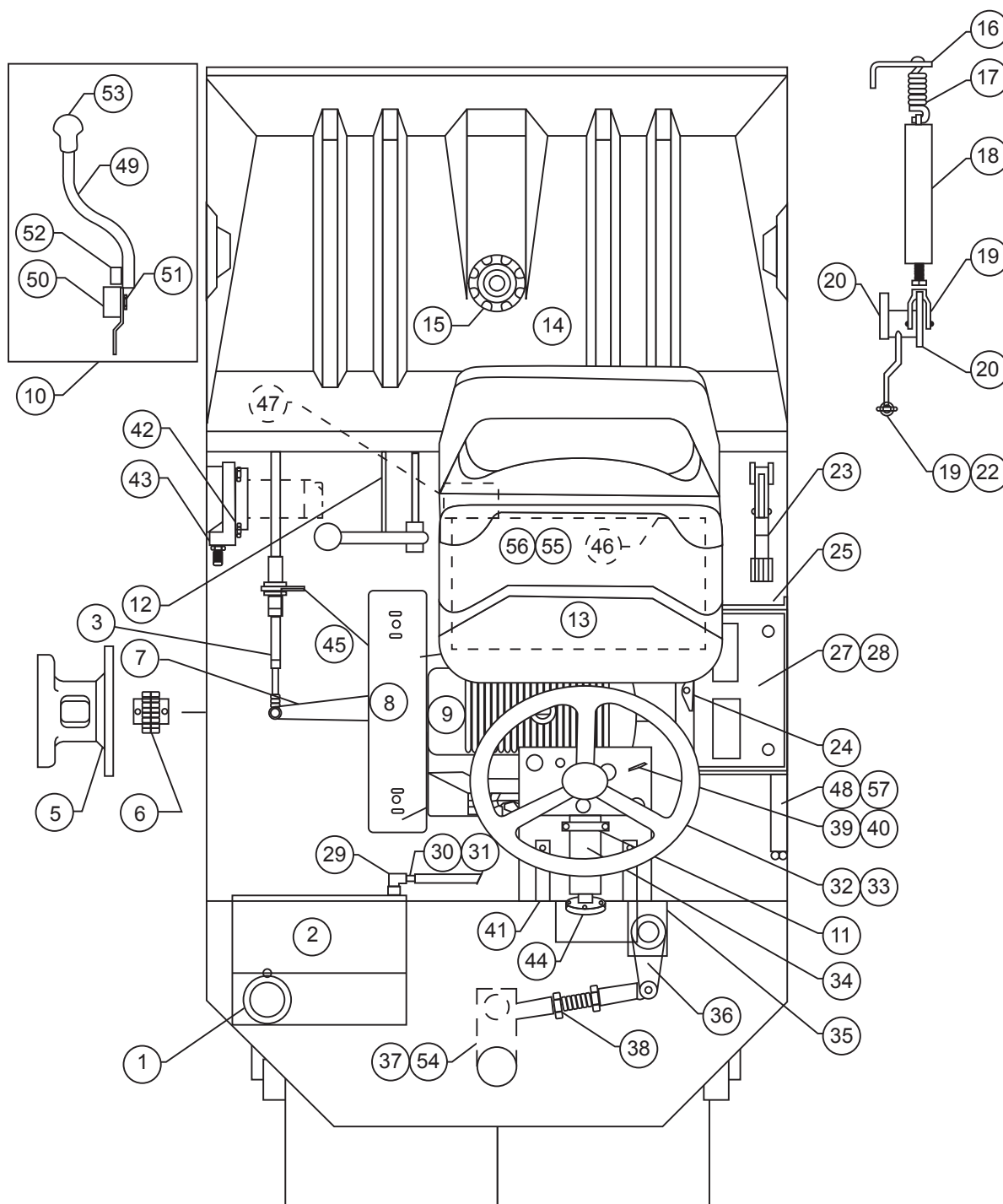
Item No.	Part No.	Description	Qty.
1	375-0003	Water Temp Gauge	1
2	375-0001	Engine Hour Meter.	1
3	375-0013	Volt Meter.	1
4	375-0023	Oil Pressure Gauge	1
5	375-0009	Fuel Gauge	1
6	335-0172	Lights Consisting of Items 6, 7 - OPTIONAL	1
7	335-0071	Toggle Switch (On-Off) - OPTIONAL	2
8	335-0067	Rubber Boot - OPTIONAL	2
9	207-0049	Starter - Kubota Z602	1
10	207-0008	Ignition Switch - Kubota	1
11	335-0021	Terminal Board	1
12	335-0063	30 Amp Circuit Breaker	1
13	207-0030	Glow Plug Indicator Light (Kubota)	1
14	335-0019	Green Running Light - OPTIONAL.	1
15	335-0267	Battery	1
16	375-0004	Water Temp Sendor.	1
17	207-0032	Glow Plug	1
18	335-0002	(POS) Battery Cable	1
19	335-0020	(NEG) Battery Cable	1
20	207-0019	Solenoid	1
21	375-0024	Oil Pressure Sendor	1
22	207-0053	Alternator- Dynamo Assy.	1
23	335-0013	Neutral Start Switch	1
24	000-KD076	Beuthling Wiring Harness Kubota Z602 (Not Shown)	1
25	335-0084	Back Up Alarm.	1
26	335-0094	Switch, Back Up Alarm	1
27	338-0041	Water Pump - OPTIONAL	1
28	205-0295	Kubota Diesel Engine Z602.	1
29	207-0028	Lamp Timer (Kubota).	1
30	335-0007	Amber Indicator Light (Water Pump "On")	1
31	207-0051	Fuel Stop Timer	1
32	207-0055	Fuel Stop Solenoid.	1

ELECTRICAL SCHEMATIC - W/ HONDA GX630



ELECTRICAL SYSTEM - W/ HONDA GX630

Item No.	Part No.	Description	Qty.
1	335-0074	Connector - 5 way (Key Switch)	1
2	335-0063	Circuit Breaker, 30 AMP (under dash).	1
3	335-0267	Battery, 12 Volt.	1
4	335-0019	Green Indicator Light (Key On)	1
5	375-0001	Hourmeter	1
6	335-0105	Red Indicator Light (Low Oil).	1
7	335-0007	Blue Indicator Light (Water Pump On).	1
8	200-0388	Engine, Honda GX630.	1
9	335-0013	Switch, Neutral Start (at control lever)	1
10	335-0311	Switch, Ignition 5 pole - 12 Volt w/Keys.	1
11	335-0312	Keys, Spare Ign. Keys (set of 2)	1
12	375-0013	Voltmeter	1
13	335-0021	Terminal Block (under dash)	1
14	338-0041	Water Pump (drum spray system).	1
15	200-0409	Regulator	1
16	335-0071	Switch, Toggle (On-Off).	1
17	335-0067	Rubber Boot.	
18	335-0265	Back-up Alarm - OPTIONAL	1
19	335-0094	Switch-Back-up Alarm - OPTIONAL	1
20	335-0300	Work Lights - OPTIONAL2 or 4
21	000-2207	Wire Harness Honda Gasoline Engine (not shown)	1
22	335-0288-24	Battery Cable (Neg) Black.	1
23	335-0289-23	Battery Cable (Pos) Red	1
24	335-0307	Fan (Mtd. on Cooler)	1
25	375-0009	Fuel Gauge	1



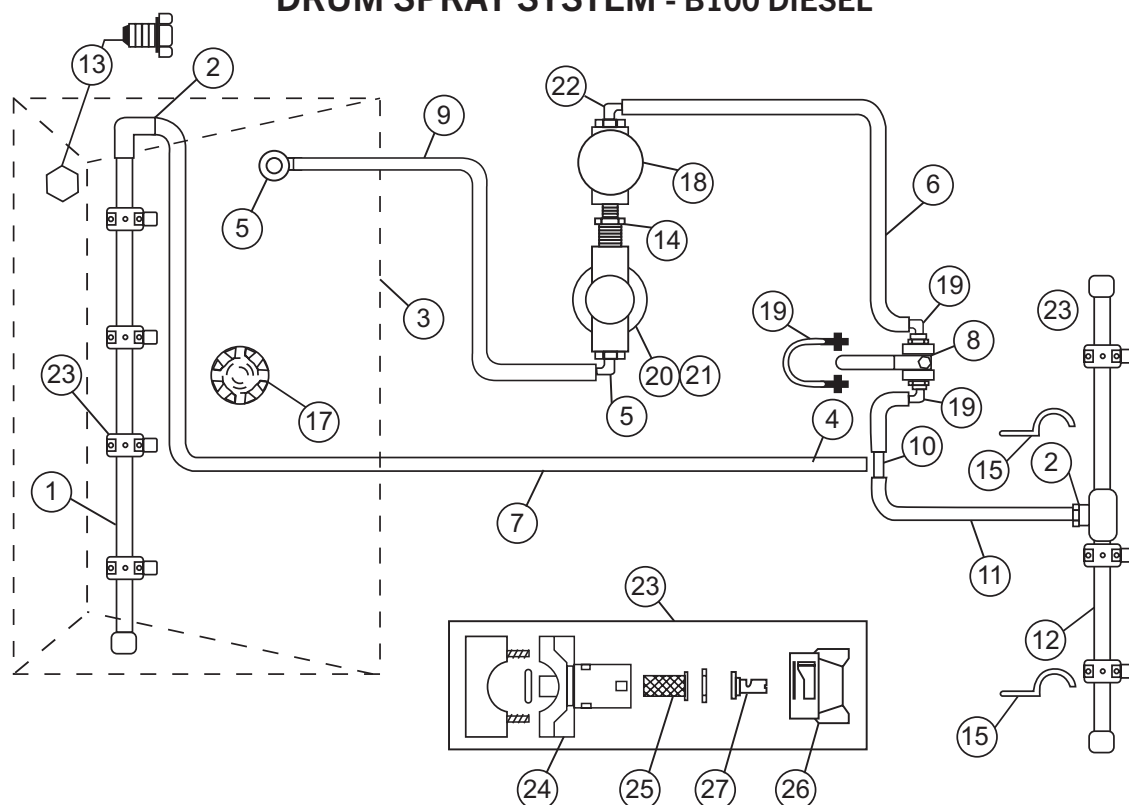
MISCELLANEOUS COMPONENTS

Item No.	Part No.	Description	Qty.
1	350-0033	Filler Cap Complete	1
2	000-1358	Fuel Tank Assembly.	1
3	315-0010	Pump Control Cable	1
4	645-0022	Ball Joint	2
5	345-0007	Pump Mount.	1
6	230-0007	Chain Coupling - Engine/Pump Honda 1" Bore	1
6a	230-0006	1 1/8" Bore	1
7	000-3020	Pump Control Lever	1
8	200-0390	Muffler And Guard GX630	1
9	200-0388	Engine - Honda GX630 w/Muffler & Guard	
9	205-0295	Engine - NOT SHOWN - Kubota Diesel X602	1
10	000-1441	Control Lever, Forward & Reverse (Complete Assembly).	1
11	397-0005	Clamp - Steering Column	1
12	000-2010	Upper Control Cable Bracket	1
13	395-0001	Seat	1
14	000-1402	Water Tank.	1
15	350-0020	Water Cap w/Chain	1
16	000-1337	Spring Anchor	1
17	360-0001	Tension Spring.	1
18	000-1341	Brake Band	1
19	635-0002	Clevis for Brake Band & Rod.	3
19	635-0005	Pin & Cotter for Clevis	3
20	000-1481	Brake Arm	1
21	000-1479	Back Up Alarm Switch Bracket	1
22	000-1373	Brake Rod	1
23	310-0001	Brake Lever	1
24	385-0074	Battery Hold Down Clamp	1
25	000-1405	Battery Tray	1
26	335-0094	Back Up Alarm Switch.	1
27	335-0267	Battery 12 Volt	1
28	335-0020	Battery Cable - Negative - NOT SHOWN	1
29	502-0014	Adapter, 90 Degree.	1
30	645-0038	Fuel Hose Clamp	4
31	500-0009	Barbed Insert 1/4" NPT Male x 1/4" Barb	1
32	330-0026	Steering Wheel.	1
33	330-0025	Steering Wheel Cap.	1
34	000-3054	Steering Column Assembly	1
35	330-0021	Steering Gear - NOT SHOWN	1
36	330-0006	Pitman Arm - Steering	1
37	645-0025	Ball Joint - (000-1464 Assembly).	2

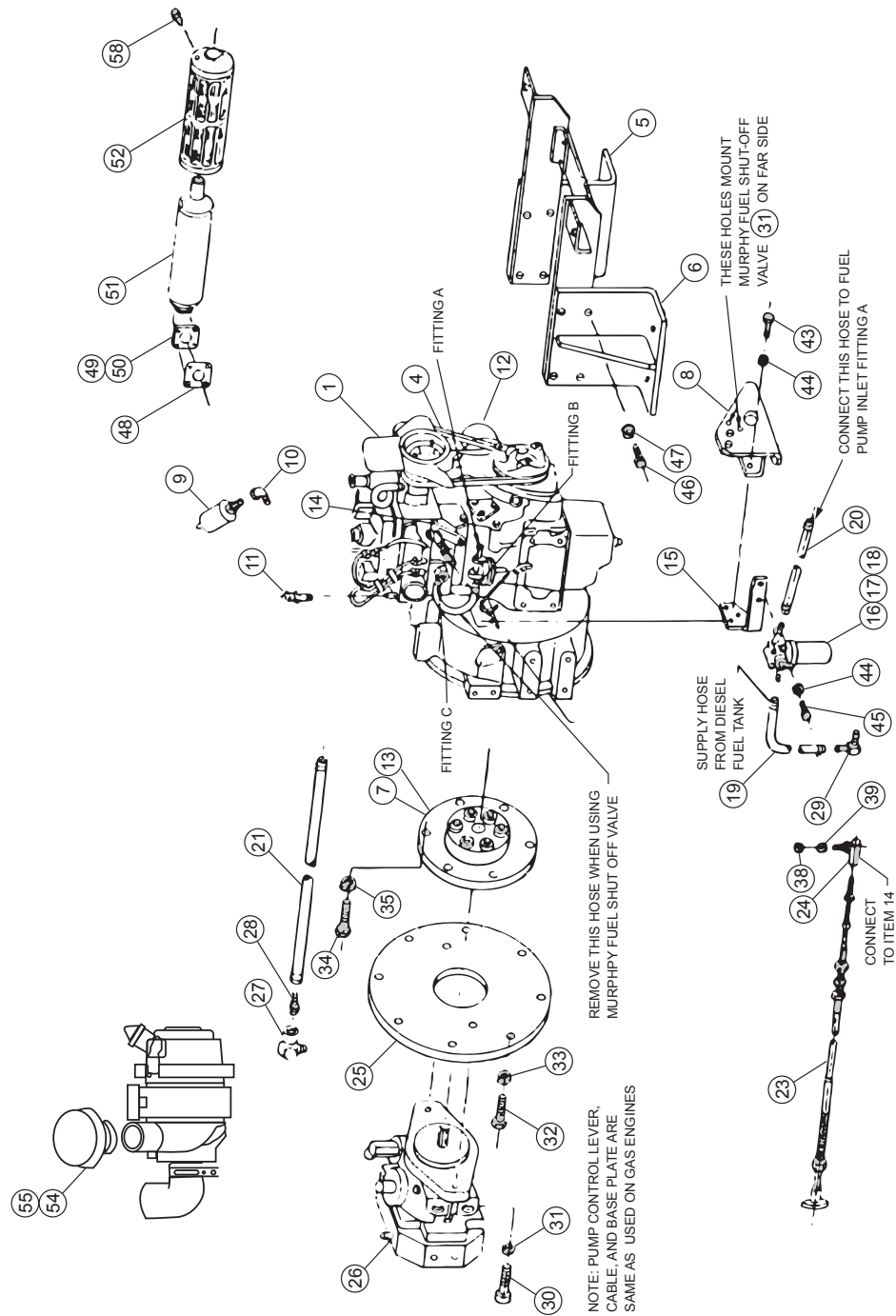
MISCELLANEOUS COMPONENTS (CONTINUED)

38	000-1036	Steering Tie Rod - (000-1464 Assembly)	1
39	315-0019	Throttle Cable w/Tee Handle	1
40	315-0001	Choke Cable	1
41	000-1389	Brace - Steering Column	2
42	000-1354	Mounting Plate - Hydraulic Drive Motor	1
43	615-7002	Adjusting Screw - Hydraulic Drive Motor	1
44	330-0007	Steering Coupling	1
45	000-3021	Pump Control Base Plate	1
46	000-1240	Seat Base	1
47	335-0265	Back Up Alarm	1
48	125-0001	Heat Exchanger - Hydraulic	1
48	125-0003	Heat Exchanger - Hydraulic (starting with Serial #10011693)	1
49	000-1437	Control Lever (Lever Only)	1
50	000- 1438	Mount - Control Lever	1
51	000-1440	Bolt - Adjusting	1
52	310-0005	Plunger - Spring	1
53	350-0031	Knob - Black Soft Plastic	1
54	000-2007	Spacer - Steering Ball Joint	2
55	395-0019	Seat Slide (pair)	1
56	395-0002	Arm Rests - OPTIONAL (pair)	1
57	335-0307	Fan (Mtd. on Cooler) - NOT SHOWN	1

DRUM SPRAY SYSTEM - B100 DIESEL



Item No.	Part No.	Description	Qty.
1	000-2147	Rear Spray Bar (Bar Only)	1
2	540-0002	Adapter, Straight Poly	2
3	000-1402	Water Tank	1
4	424-0003-3	Water Hose, ½" I.D. x 3" Lg	1
5	542-0003	Adapter, 90 Degree Poly.	2
6	424-0003-9	Water Hose, ½" I.D. x 9" Lg.	1
7	424-0003-32	Water Hose, ½" I.D. x 32" Lg.	1
8	530-0001	Ball Valve, ½" Bronze	1
9	424-0003-12	Water Hose, ½" I.D. x 12" Lg.	3
10	543-0003	Adapter, Tee Poly	3
11	424-0003-66	Water Hose, ½" I.D. 66" Lg.	1
12	000-2146	Front Spray Bar (Bar Only)	1
13	546-0002	Plug, ¾" PVC.	1
14	540-0004	Adapter, Straight Poly	1
15	645-0008	Clamp	4
16	645-0019	U-Bolt.	1
17	350-0020	Vented Water Cap w/chain	1
18	338-0041	Water Pump.	1
19	542-0002	Adapter, 90 Degree Poly.	1
20	338-0020	Strainer, Water System	2
21	338-0031	Screen, Replacement for 338-0020	1
22	542-0004	Adapter, 90 Degree Poly.	1
23	338-0035	Complete Spray Nozzle Assembly	7
NOZZLE ASSEMBLY CONSISTS OF:			
24	338-0011	Base, Spray Nozzle.	1
25	338-0013	Strainer, Spray Nozzle.	1
25	338-0012	Cap & Gasket, Spray Nozzle.	1
26	338-0010	Spray Tip (Brass).	1
	645-0063	Hose Clamp.	10

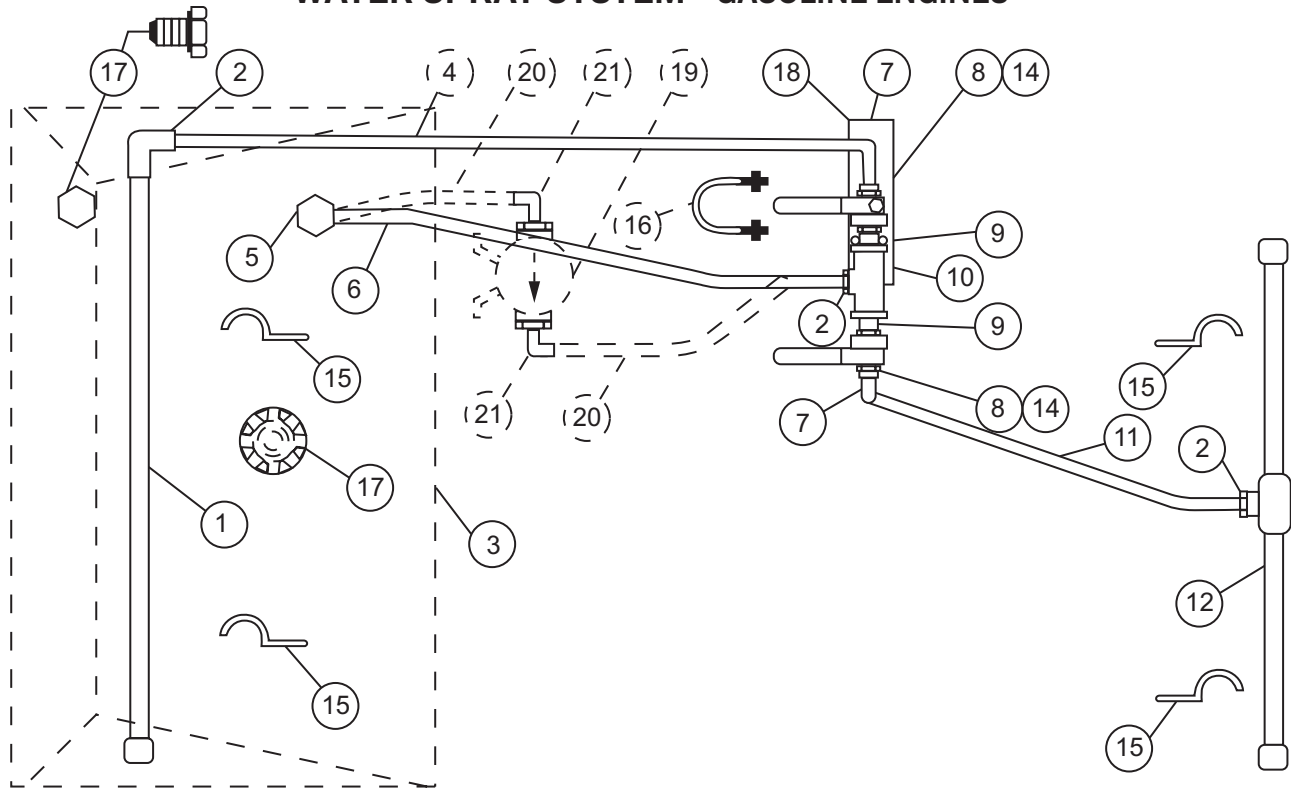


KUBOTA Z602 DIESEL ENGINE & RELATED COMPONENTS


B100

Item No.	Part No.	Description	Qty.
1	205-0335	Fan Blade	1
4	235-0054	Fan Belt	1
5	000-KD065	Engine Bracket - Left Hand	1
6	000-KD063	Engine Bracket - Right Hand	1
7	230-0036	Nylon Flange	1
8	000-KD068	Bracket For Throttle	1
9	375-0024	Oil Pressure Sender	1
10	502-0041	Adapter, 90 Degree	1
11	375-0010	Water Temperature Sender	1
12	205-0010	Oil Filter	1
13	230-0037	Spined Hub	1
15	000-KD009	Fuel Filter Bracket	1
16	205-0004	Fuel Filter Cup	1
17	205-0046	Fuel Filter Cup 0 - Ring	1
18	205-0011	Fuel Filter Element	1
19	432-0001-27	5/16" Fuel Line Hose x 27" Lg. (From Tank)	1
20	432-0001-14	5/16" Fuel Line Hose x 14" Lg. (To Fuel-Pump Inlet)	1
21	420-0001-25	5/16" Fuel Line Hose x 25" Lg. (Return)	1
22	000KD068	Throttle Cable Bracket (not shown)	1
23	315-0014	Throttle Cable	1
24	645-0026	Ball Joint	1
25	230-0042	Hydraulic Pump Mounting Plate Housing	1
26	100-0008	Propell Pump. SEE HYDRAULIC DIAGRAM	1
27	502-0014	Adapter, 90 Degree	1
28	500-0061	Adapter, Straight	1
29	502-0021	Adapter, 90 Degree	1
30	600-5014	1/2" N.C. x 1 1/2" S.H.C.S	2
31	625-0007	1/2" Lock Washer	2
32	600-3000	3/8" N.C. x 1 1/4" H.H.C.S	8
33	625-0005	3/8" Lock Washer	6
34	600-2000	5/16" N.C. x 3/4" H.H.C.S	6
35	625-0004	5/16" Lock Washer	6
36	600-1000	1/4" N.C. Serrated Flange H.C.S	1
37	605-0027	1/4" N.C. Serrated Flange Hex. Nut	1
38	605-0015	1/4" N.F. Hex. Nut	2
39	625-0003	1/4" Lock Washer	2
40	615-8002	#10 N.C. x 5/8" Round H.H.C.S	1
41	605-0012	#10 N.C. Hex. Nut	1
42	625-0019	#10 Lock Washer	1
43	610-1002	8mm x 1.25 x 20mm H.H.C.S	2
44	610-1017	8mm Lock Washer	4
45	610-1025	8mm x 1.25 x 65mm H.H.C.S	2
46	610-1001	10mm x 1.25 x 35mm H.H.C.S	8
47	610-1009	10mm Lock Washer	8
48	205-0065	Muffler Gasket	1
49	205-0066	Muffler Flange Cover L.H. NOT SHOWN	1
50	205-0067	Muffler Flange Cover R.H. NOT SHOWN	1
51	000KD077	Muffler Only	1
52	205-0068	Muffler Cover	1
53	000-0090	Muffler Pipe	1
54	205-0254	Air Cleaner Assy.	1
55	205-0246	Air Cleaner Element	1
56	205-0336	Radiator (not shown)	1
57	205-0338	Radiator (Complete Kit) (not shown)	1

WATER SPRAY SYSTEM - GASOLINE ENGINES



Item No.	Part No.	Description	Qty.
1	000-1403	Rear Spray Bar PVC	1
2	540-0002	Adapter, Straight	2
3	000-1402	Water Tank, 36 U.S. Gal.	1
4	424-0003-26	Water Hose ½" I.D. x 26" Lg. (Blue)	1
5	542-0003	Adapter, 90 Degree Poly (3 Required with Water Pump)	1
6	424-0003-13	Water Hose ½" I.D. x 13" Lg. (Blue)	1
7	542-0002	Adapter, 90 Degree Poly	2
8	530-0001	Ball Valve ½"	2
9	520-0010	Pipe Nipple ½"	2
10	523-0001	Pipe Tee ½"	1
11	424-0003-48	Water Hose ½" I.D. x 48" Lg. (Blue)	1
12	000-1123	Front Spray Bar PVC (Bar Only)	1
13	546-0002	Plug ¾" PVC	1
14	000-2001	Handle Extension - Water Valve	2
15	645-0008	Pipe Clamp ½"	4
16	645-0019	U-Bolt for Ball Valve	1
17	350-0020	Water Cap w/Chain	1
18	000-1733	Water Valve Bracket	1
19	338-0041	Water Pump - OPTIONAL	1
20	424-0003-8	Water Hose ½" I.D. x 8" Lg. (Blue) - OPTIONAL	2
21	542-0004	Adapter, 90 Degree Poly	1

WEIGHTS

Shipping Weight 1800 lbs.
Operating Weight (Full Ballast + Operator) 3100 lbs.

DIMENSIONS

Overall Length 77 in.
Overall Height 63.75 in.
Overall Width 40 in.
Wheelbase 52.75 in.
Curb Clearance 9.50 in.
Wall Clearance 875 in.
Turning Radius Inside 60 in.

CAPACITIES

Kubota 1.8qts.
Fuel (Honda) 2.75 gal.
Hydraulic Fluid 2.5 gal.
Engine Oil (Honda). 1.5 qts.
Water Tank 34 gal.

DRUMS

FRONT:

Type Steel, machined surface w/ballast fill plug
Overall Width 30 in.
Diameter 20 in.
Shell Thickness437 in.
Oscillation 24° Total
Steering Front Drum Automotive Type, Mechanical

REAR:

Type Steel, machined surface w/ballast fill plug
Overall Width 37 in.
Diameter 24 in.
Shell Thickness437 in.

ONE YEAR LIMITED WARRANTY

We warrant to the original consumer that each new unit sold by us will be free from manufacturing defects in materials or workmanship in normal service for a period of one year from date of shipment, provided the unit is operated and maintained in accordance with NEW BEUTHLING instruction and manuals.

Defective parts are to be returned to the factory, freight prepaid, and will be replaced or repaired whichever NEW BEUTHLING elects. Some components, i.e., engine, hydraulic pumps and motors etc. are subject to manufacturer's warranty. Most of these warranties meet or exceed the NEW BEUTHLING WARRANTY.

For the first 12 months, NEW BEUTHLING will cover all parts and labor. After the first six months, rental units and the following specific components are not covered under the NEW BEUTHLING WARRANTY: batteries, electrical components, throttle, choke, & control cables.

This warranty is not applicable to normal maintenance service (such as engine tuneups) or normal replacement of service or wear items, such as filters, lubricating oil, grease and rubber scrapers.

Allowance for repairs or alterations will not be allowed unless they are authorized in writing by NEW BEUTHLING.

Liability for damages or delay caused by defective parts will not be assumed by NEW BEUTHLING.

Credit will not be allowed if in the opinion of NEW BEUTHLING a part failed through neglect of maintenance, misuse or as the result of an accident. The machine may not be altered or modified in any manner which affects the mechanical operation of the machine as designed by the manufacturer.

NEW BEUTHLING makes every effort to continually improve its products, and it does so without incurring any obligation to make such changes on units previously shipped. NEW BEUTHLING also reserves the right to discontinue the production of any product at any time.

To obtain warranty service, purchaser must bring the unit to an authorized NEW BEUTHLING dealer.

DRIVE

Drive System Hydrostatic, rear drum drive
Travel Speed 0-5 MPH
Engine Kubota Z602/Honda GX 630
Cylinder (gasoline), Electric Start, 12 Volt Battery

WATER SPRAY SYSTEM

Type Gravity w/dual brass ball valves
Tank Polyethylene, 3" fill neck, cap w/safety chain rear, 34 gal. capacity
Drum Scrapers Four adjustable, neoprene rubber
Drum Cocoa Mats One each drum, pivoting

STANDARD EQUIPMENT

- Brakes Dynamic w/mechanical band type parking brake on rear drum, adjustable brake lever
- Transmission By-Pass Towing Valve
- Gauges Fuel, Hourmeter, Voltmeter & Low Oil Indicator Light
- Vandal Protection Lockable fill caps for fuel and hydraulic fluid
- Safety Devices Neutral Start Switch
- Tie Downs (6) for Transporting
- Seat Slides For Seat Adj.
- Back-up Alarm

OPTIONAL EQUIPMENT

- Special Paint
- Arm Rests
- Vandal Protection Package (Locking floor & dash cover)
- Kubota Diesel Engine, water cooled, 2 cylinder
- Sight Gauge, Hydraulic Reservoir
- Pressurized Sprinkler System
- Work Lights
- ROPS (Rollover Protection Structure) w/Seat belt

COMPACTOR IDENTIFICATION INFORMATION

COMPACTOR SERIAL NUMBER: _____

ENGINE, MAKE, MODEL & SERIAL NUMBER: _____

PURCHASE DATE: _____

DEALER: _____

PHONE #: _____

COMPACTOR SERVICE INFORMATION

M07-23-100

New Beuthling
465 Griffin Blvd.
Amery, WI 54001
715-263-2300

